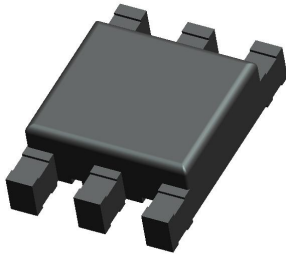


Common Mode Filters(SMD)

For General Signal Line



- ⓪ Operating temperature range covers from -40 to +105°C
- ⓪ Non-dissolution of the abutment amounts in circuit board mounting
- ⓪ The products contain no lead and also support lead-free soldering.
- ⓪ This product conforms to the standards that are slated to be

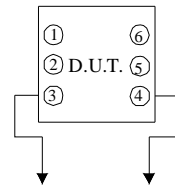
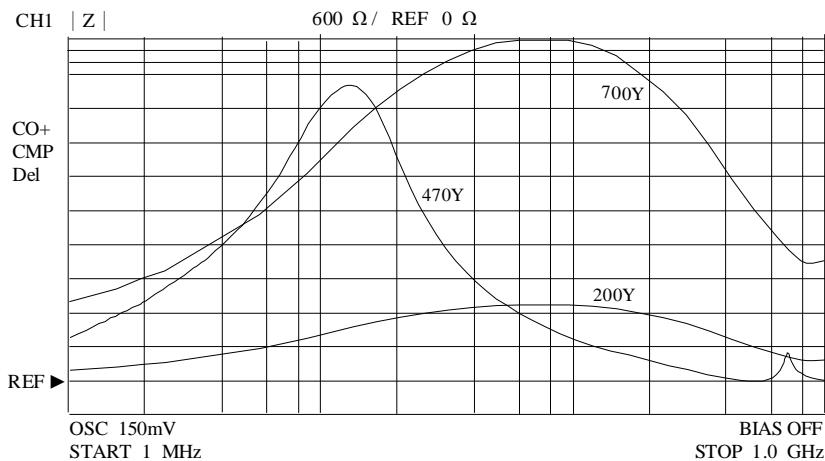
introduced under the RoHS Directive

SPECIFICATION FOR APPROVAL

I . ELECTRICAL CHARACTERISTICS :

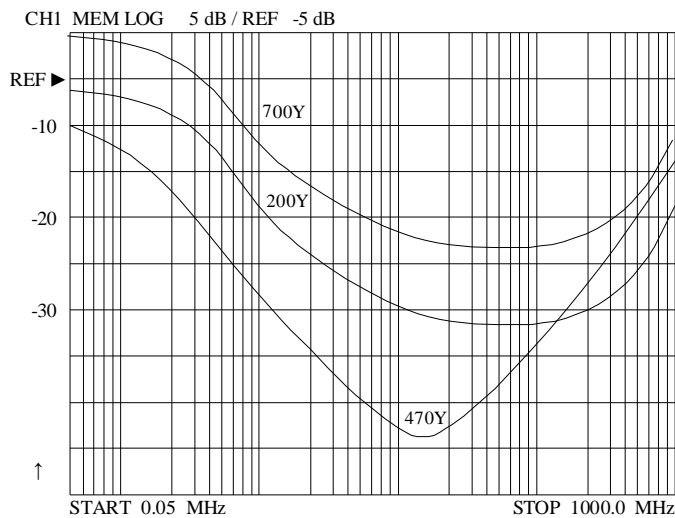
Dwg. No.	L (uH) 100K/0.1V	LL (uH) 100K/0.02V	C (pF) 100K/0.02V	RDC (Ω) MAX.	Turns Ratio	Insertion Loss		Impedance (z)		HI-POT N-N
						Freq. range	dB	Freq. range	min (Ω)	
SF0903470Y2B-□□□	47.0 min.	0.18 +0	20 +0	0.4	1:1	1~100 MHz	20 -0	10~ 30 MHz	1000	500 Vac 60 Hz 1 mA 1 min.
SF0903200Y2B-□□□	20.0 min.	0.10 +0	18 +0	0.4	1:1:1	30~300 MHz	20 -0	30~100 MHz	800	
SF0903700Y2B-□□□	70.0 min.	0.10 +0	15 +0	0.45	1:1:1	30~300 MHz	20 -0	30~100 MHz	1500	

II . IMPEDANCE VS. FREQUENCY :



Test instrument :
RF Impedance Analyzer HP4291A

III . INSERTION LOSS CURVE :

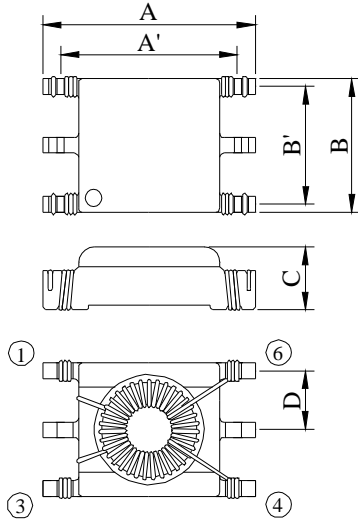


Common Mode Filters(SMD)

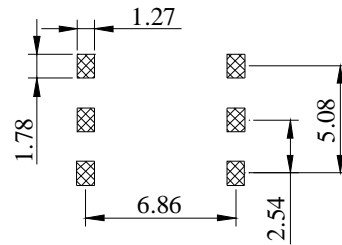
For General Signal Line

SPECIFICATION FOR APPROVAL

IV . CONFIGURATION & DIMENSIONS :

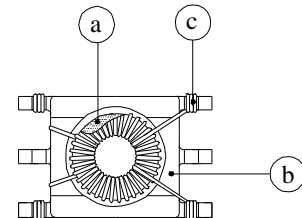
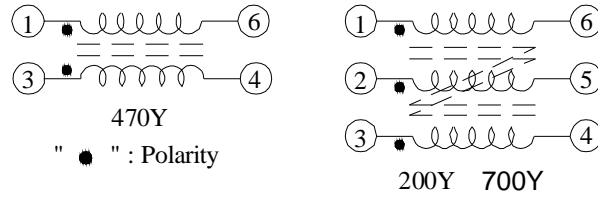


A :	9.20 max.	m / m
A' :	7.24 typ.	m / m
B :	6.60 max.	m / m
B' :	5.08 typ.	m / m
C :	2.50 max.	m / m
D :	2.54 typ.	m / m



(PCB Pattern)

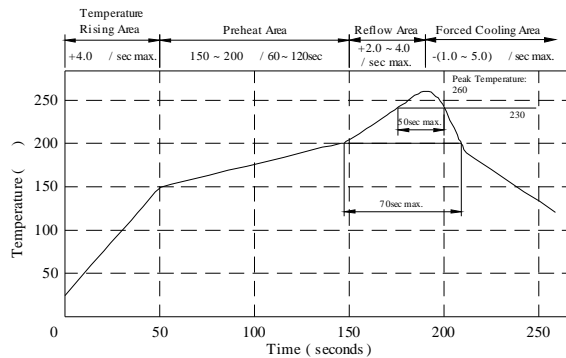
SCHEMATIC DIAGRAM :



VI . MATERIALS :

- a . Core : Ferrite toroidal core
- b . Base : Phenolic
- c . Wire : Enamelled copper wire (class F)
- d . Terminal : Cu/Sn
- e . Remark : Products comply with RoHS' requirements

Peak Temp : 260 max.
Max time above 230 : 50sec max.
Max time above 200 : 70sec max.



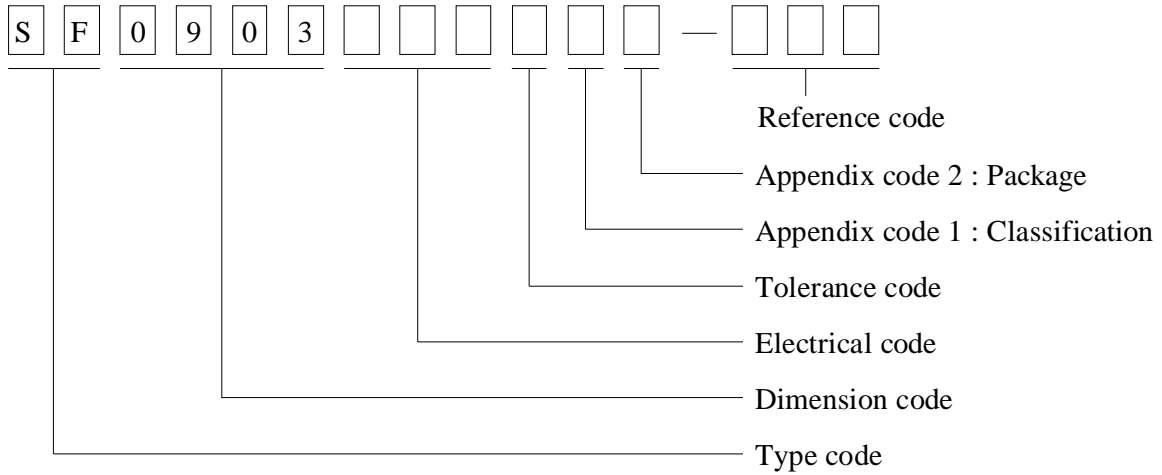
VII . GENERAL SPECIFICATION :

- a . Storage temp. : -40 ----+125
- b . Operating temp. : -40 ----+105
- c . Resistance to solder heat : 260 .10 secs.

Common Mode Filters(SMD) For General Signal Line

SPECIFICATION FOR APPROVAL

VII. DWGING NUMBER EXPRESSION :



Appendix code 1 : Product Classification

L : Lead Free Standard products comply with RoHS' requirements

1 ~ 9 : Lead Free Special products comply with RoHS' requirements

Appendix code 2 : Package Information

Code	Inner Package	Inner Package Q'TY	Remark
A	T.B.D.	T.B.D.	
B	T / R (Reel Package)	1500 pcs	