

| | | | | | | |
|---|---|------------------------------------|---------------------|---------------------------------|--|---------|
| 客户名称 CUSTOMER | ----- | 客户品名 CUSTOMER P/N | ----- | 版别 REV. | A | |
| 产品类型 PRODUCT TYPE | Common Mode Line Filter | 中晟品名 OURS P/N | DG-C-1005HC-SERIES | | | |
| 一.外观图/DIMENSION (单位/UNIT : mm) | | | | A | 9.5 ±0.3 | |
| | | | | B | 8.3 ±0.3 | |
| | | | | C | 5.3 Max | |
| | | | | D | 1.2 Typ | |
| | | | | E | 7.5 Typ | |
| | | | | F | 6.3 Typ | |
| | | | | | | |
| 二.电路图/CIRCUIT DIAGRAM | | | | 三.注意事项/NOTE : | | |
| | | | | 1.印字 : 白色 2.平整度 : 0.12MM MAX | | |
| 四.电气特性/ELECTRICAL CHARACTERISTIC | | | | | | |
| Part Number | Common mode Impedance @100MHz (Ω) | Inductance (uH) @100KHz/0.1V | DCR (mΩ) Max. | Rated Current (A) Max. | Insulation Test Voltage (AC)Max. | Marking |
| DG-C-1005HC-102 | 1000 (Typ) | 11 (Typ) | 30 | 2.5 | 500V | •102 |
| | | | | | | |
| | | | | | | |
| | | | | | | |
| | | | | | | |
| (1).Rated Current: Temp.rise 40°C Typ (2).Operating Temperature: -40°C up to +125°C (3).Storage Temperature: -20°C up to +40°C, 75% RH max. | | | | | | |

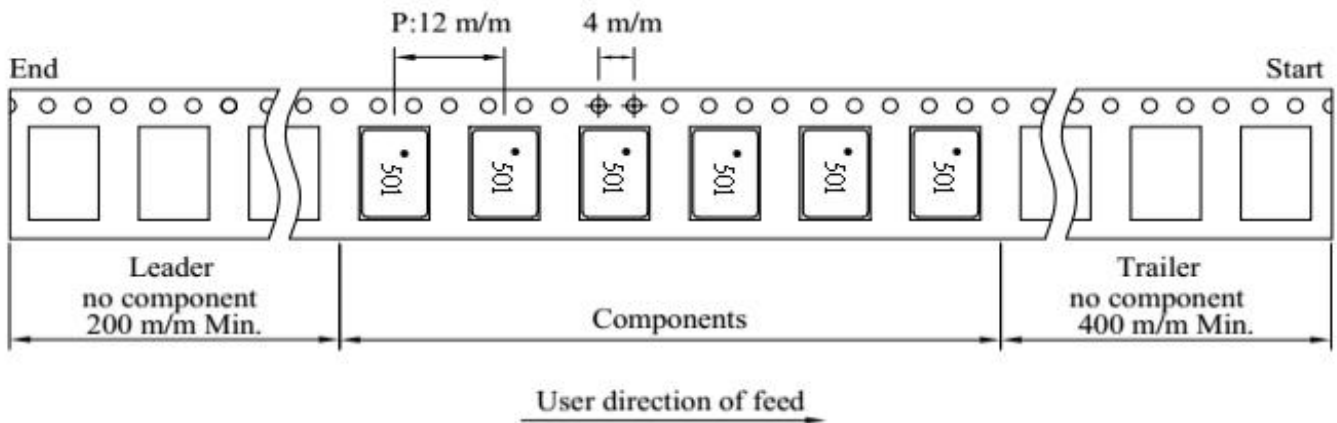
承认书/SPECIFICATION FOR APPROVAL

| | | | | | |
|----------------------|----------------------------|----------------------|--------------------|------------|---|
| 客户名称 CUSTOMER | ----- | 客户品名 CUSTOMER P/N | ----- | 版别 REV. | A |
| 产品类型 PRODUCT TYPE | Common Mode Line Filter | 中晟品名 OURS P/N | DG-C-1005HC-SERIES | | |

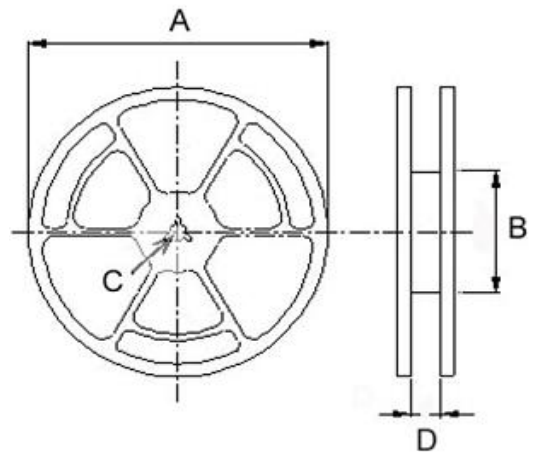
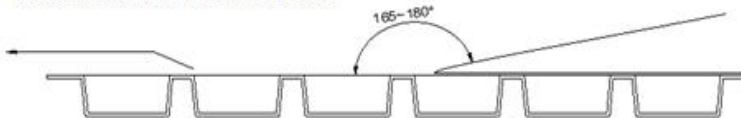
五.材料清单/MATERIAL LIST

| NO. | ITEM | DESCRIPTION |
|-----|--------|--------------|
| 1 | CORE | FERRITE |
| 2 | CASE | DAP |
| 3 | WIRE | P180 Grd1 |
| 4 | SOLDER | Sn99.3:Cu0.7 |
| 5 | INK | WHITE |
| | | |

六.编带规格/TAPING SPECIFICATIONS



Adhesive strength of cover tape is 20 to 120 gf
The conduction band direction

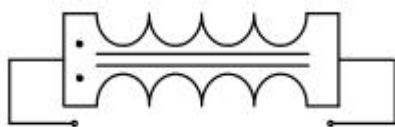
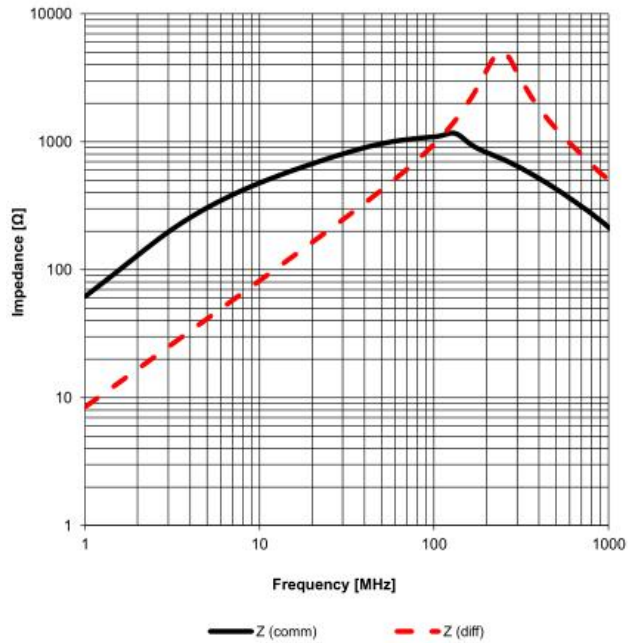


| Reel Dimensions (Unit: mm) | | | | Quantity |
|----------------------------|-----|----|------|----------|
| A | B | C | D | Pcs/Reel |
| 330 | 100 | 13 | 16.5 | 1000 |

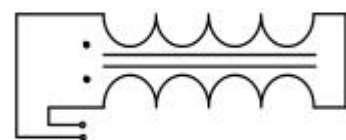
| | | | | | |
|----------------------|----------------------------|----------------------|--------------------|------------|---|
| 客户名称 CUSTOMER | ----- | 客户品名 CUSTOMER P/N | ----- | 版别 REV. | A |
| 产品类型 PRODUCT TYPE | Common Mode Line Filter | 中晟品名 OURS P/N | DG-C-1005HC-SERIES | | |

七.特征曲线/CHARACTERISTICS(REFERENCE)

DG-C-1005HC-102



Common Mode



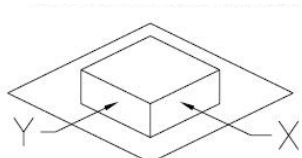
Differential Mode

承认书/SPECIFICATION FOR APPROVAL

| | | | | | |
|----------------------|----------------------------|----------------------|--------------------|------------|---|
| 客户名称 CUSTOMER | ----- | 客户品名 CUSTOMER P/N | ----- | 版别 REV. | A |
| 产品类型 PRODUCT TYPE | Common Mode Line Filter | 中晟品名 OURS P/N | DG-C-1005HC-SERIES | | |

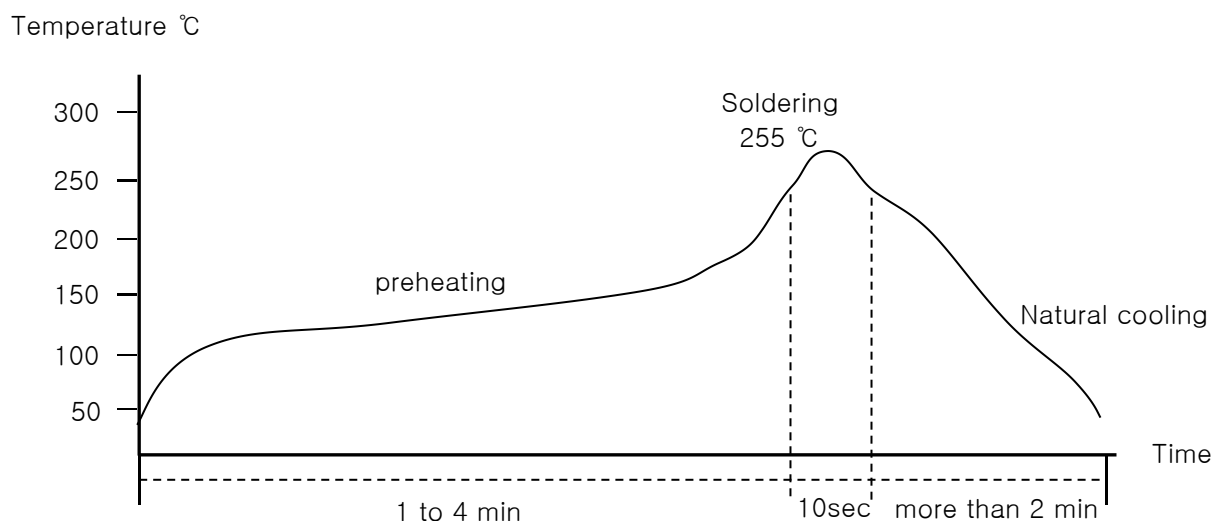
八.可靠性测试/RELIABILITY TESTING

| | |
|------------------------------------|--|
| Operating Temperature | - 40 to +125 °C (Contain Heating coil) |
| Appearance Inspection | No external defects by visual inspection |
| Terminal Strength | After soldering , between copper plaet and terminals of coils , push in two directions of X , Y with standing 10N(1.02kg) for10+/-2 sec. Terminal should not peel off. (Refer to figure at right) |
| Heat endurance of reflow soldering | Refer to figure |
| Insulating resistance | Over 100 MΩ at 100V D.C . between wire and core |
| Dielectric Strength | Apply at 0.5KV 3mA for 1 minute between wire and core |
| Temperature characteristics | Inductance coefficient (0~2,000) × 10 / °C (- 40~ + 125 °C) |
| Humidity characteristics | Inductance deviation within ± 10% , after 96 hours in 90~95% relative humidity at 40 ± 2 °C and 1 hours drying under normal condition |



A test is made under the above mentioned condition , and it is kept for 2 hours in the normal

IR Reflow profile



Temperature and humidity . After that , no mechanical and electrical defect should be found .